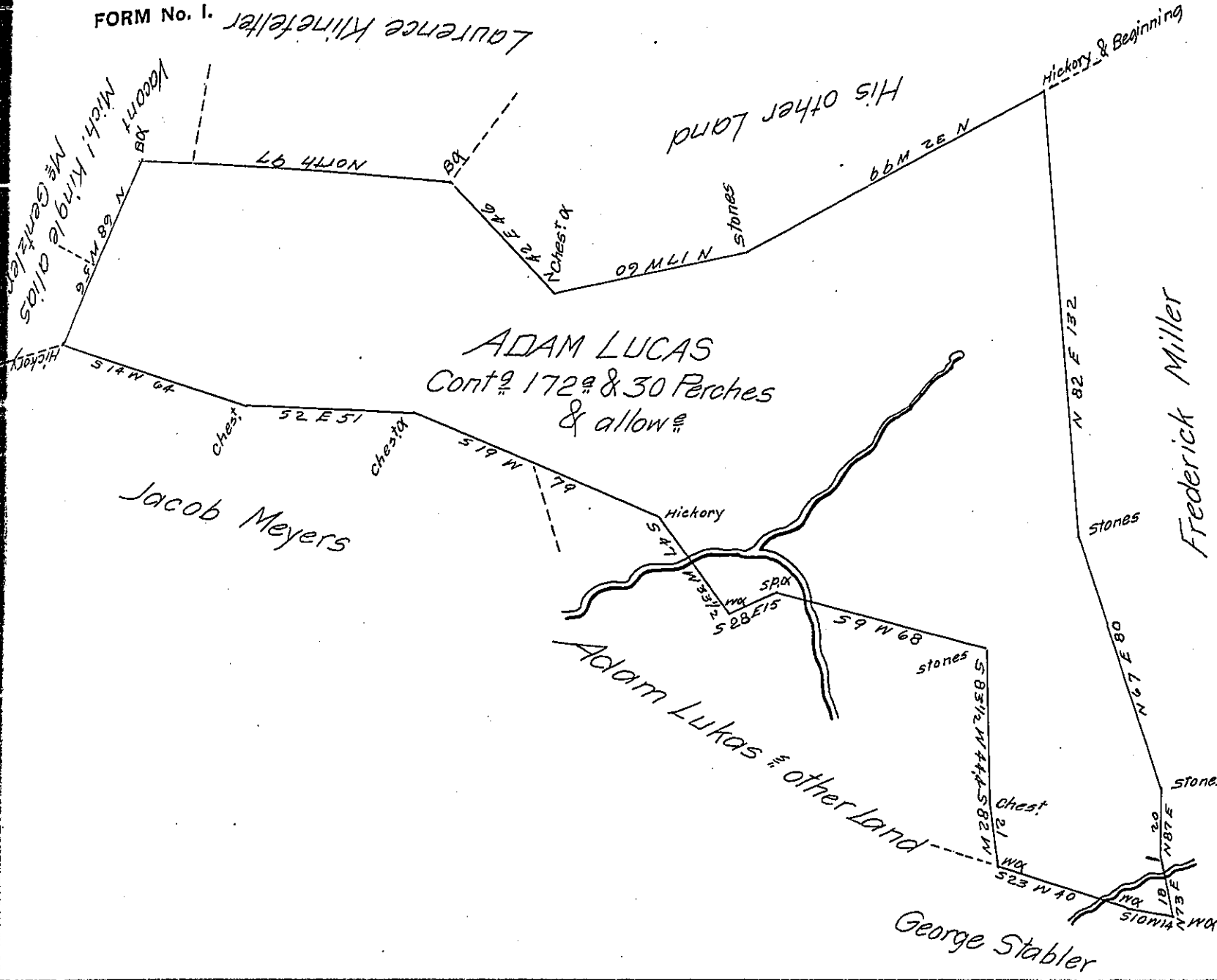


FORM No. 1.

Laurence Kintzler



Situate in <sup>100</sup>Shrewsbury Township in the County of York, Containing as above set forth one hundred and Seventy two acres and thirty perches and the usual Allowance of six Per Cent &c Surveyed by William Kersey late D.S. on the 12<sup>th</sup> month 1788. In Pursuance of a Warrant for 150<sup>0</sup> Granted to Adam Lucas bearing date the 7<sup>th</sup> day of January A.D. 1788. And now at the request of the owner Adam Lucas the above has been calculated examined and found to be Correct the 17<sup>th</sup> day of June A.D. 1811, and returned for Confirmation

To Andrew Porter Esq<sup>t</sup>  
 Surveyor General  
 Lancaster Pa

Per Jacob Spangler D.S.

IN TESTIMONY that the above is a copy of the original remaining on file in the Department of Internal Affairs of Pennsylvania, made conformably to an Act of Assembly approved the 16th day of February, 1833, I have hereunto set my Hand and caused the Seal of said Department to be affixed at Harrisburg, this eighteenth day of September 1905

*Loaen Brown*  
 Secretary of Internal Affairs.